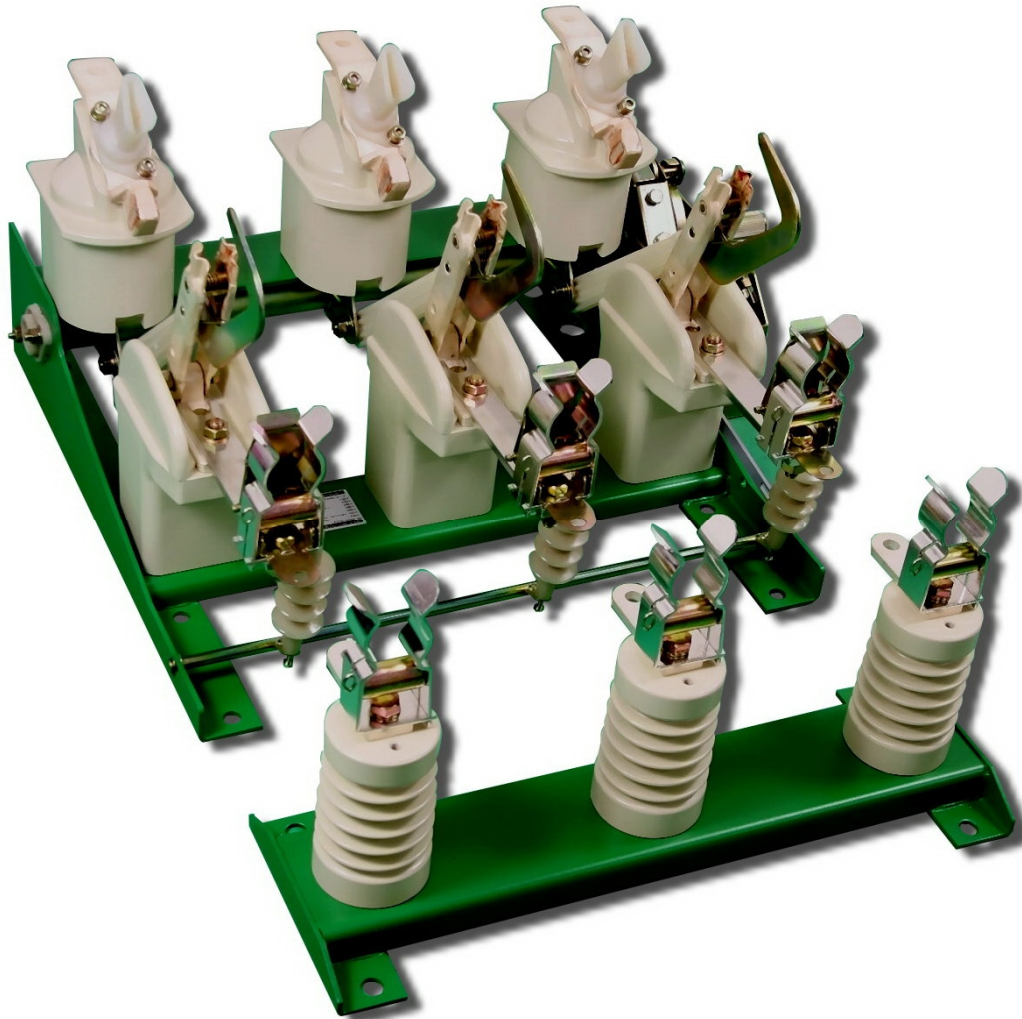
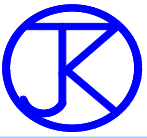


 **JAKER ELECTRIC CO., LTD**

LOAD BREAK SWITCH
for indoor installation
12kV and 24kV





JAKER load break switch is available in medium-voltage switching and protection to your distribution system with power fuse. Our load break switches are specifically designed to handle all three-phase live switching duties including full-load and associated transformer-magnetizing and cable-charging current...plus fault-closing operations.

The load break switch, the switching knives are operator in air. The visible components give the operator the ability to visualize all of the moving parts being operated. It keeps easy and safe on operation.

JW types are an economical method for your distribution applications or power panel requiring from 200 amp to 630amp switching of power source circuits up to 25.8kV. They feature external-handle-operation and motor- gear-operation.

There are three basic application circuit types - radial, primary-selective, and looped-primary use alone and in combination to design power systems. You can combine these three application circuit types to organize a power system with economics and reliability tailored to the requirements of the load

Radial circuit, such as those shown in fig.1, provides the simplest and economical method of delivering power to a load. This type of circuit is circuit can be serve load more than one route also.

For achieve higher reliability of power source the primary-selective service from two circuit will be a good method. The load is supply from a prospective circuit another circuit serve as the alternate source. If the tapping source fails, the load may be switch to alternate source.

The looped - primary circuit is another way to provide a higher reliability of power source. This type of circuit does not reduce the frequency of interruptions than radial circuit, but does permit quick recovery of service to all loads following a fault on the looped-primary feeder.

JW 型負荷開關可與幾種不同元件配套成下列幾種式樣。

—標準型之負荷開關以 JW12-630 表示。

—負荷開關與熔斷器配套之開關-熔斷器組合電器以 JW12-630 (F) 表示。

—負荷開關、熔斷器與接地開關配套成附接地開關之開關-熔斷器組合電器。此附接地開關之開關-熔斷器組合電器以 JW12-630 (LFE) 表示。

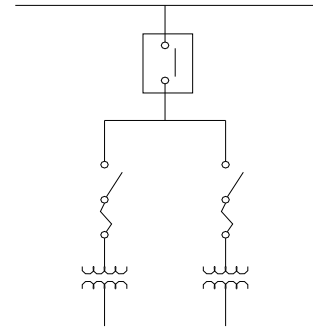
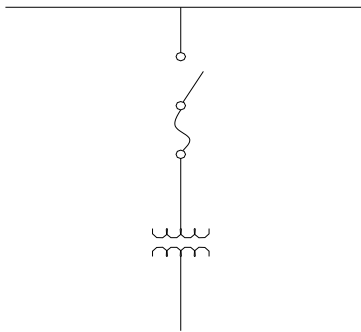
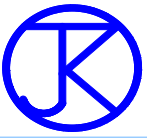


Figure 1.radial circuit

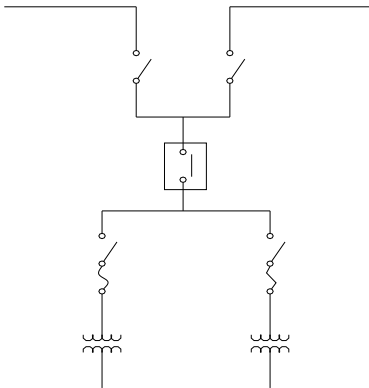


Figure 2.primary selective circuit

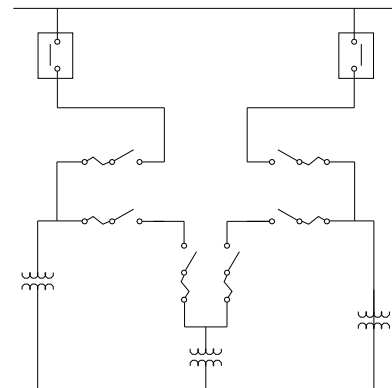
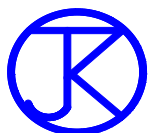


Figure 3.loop primary circuit



- 1.**Hard-drawn copper blade**, featuring silver clad contact surfaces on both sides, is utilized for continuous current carrying.
- 2.**Arc compressor** provides blowing wind from nozzle when the LBS tripping.
- 3.**Close open mechanism** requires no adjustments, It Closes or opens swiftly, positively , independent of speed of handle operation or motor rotary speed, and locks. It's positive action contributes to LBS ability to achieve fast interruption and two-time duty-cycle fault-closing ratings.
- 4.**Epoxy insulators** provide sufficient clearance distances from the base.
- 5.**Arc conducting blade**, It makes earlier and open latter than copper blade to protect the melting of copper blade.
- 6.**Fuse tripping paddle**, after power fuse element melted, the striker of power fuse trip the paddle to open the LBS immediately, It makes sure the circuit should not operate in single phase and there is no energize in any phase after one line fault or two line short circuit fault. This is not only protect your power equipment but also provide the operator a safe working environment.
- 7.**Fuse base** is separated from LBS base. The fix position can be adjusted deepens on the length of fuse.



SPECIFICATIONS

Load Break Switch Type JW

The load break switch complies with IEC publ.265 and 694. The load break switch also complies with IEC publ.420 when Combine with fuse link.

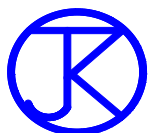
技術規範

本負荷開關符合 IEC-265 和 694 之標準。
本負荷開關與電力熔絲組合成熔絲開關組合電器時亦符合 IEC-420 之標準。

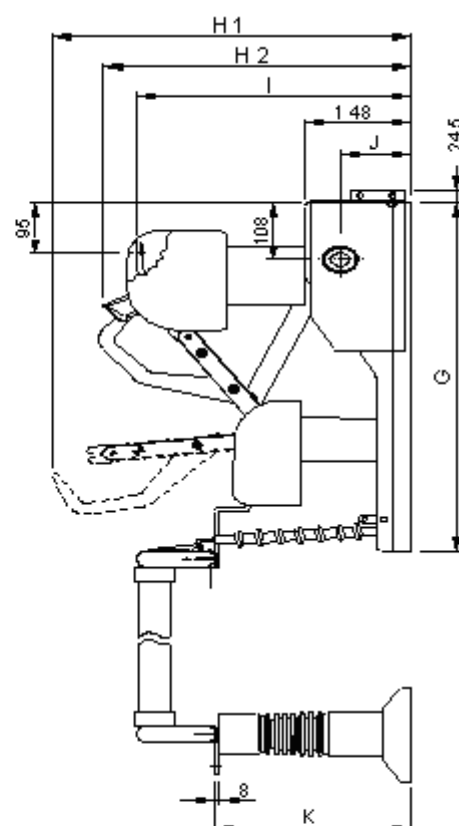
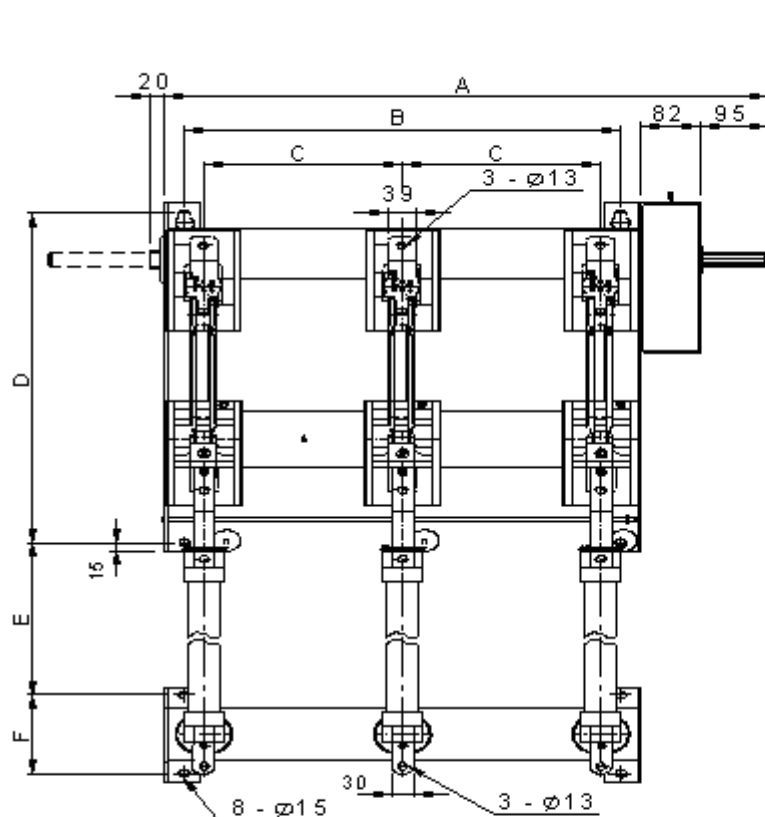
Type 型式		JW12-630	JW12-630	JW24-630
Rated voltage 額定電壓	kV	12	12	24
Max. operate voltage 最大操作電壓	kV	13.8	13.8	25.8
Rated current 額定電流	A	630	630	630
Short circuit making current (peak) 短路投入電流	kA	31.5	50	31.5
Peak withstand current 耐峰值電流	kA	31.5	50	31.5
Short time current 1 sec 短時間電流	KA	12.5	20	12.5
Max breaking current P.F.=0.25 轉移電流 (IEC 420)	A	—	1250	—
Power frequency withstand voltage 交流耐壓 (50/60Hz)	kV			
To earth and between poles 對地及相間		28	42	50
Across isolating distance 擊間		35	48	60
Impulse withstand voltage 衝擊耐壓 (1.2/50us)	kV			
To earth and between poles 對地及相間		75	75	125
Across isolating distance 擊間		80	85	145
Operating angle on the shaft 軸心操作角度		120°		
Pole distance 相間距離	mm	150	210	275

接地開關 (Earthing switch)

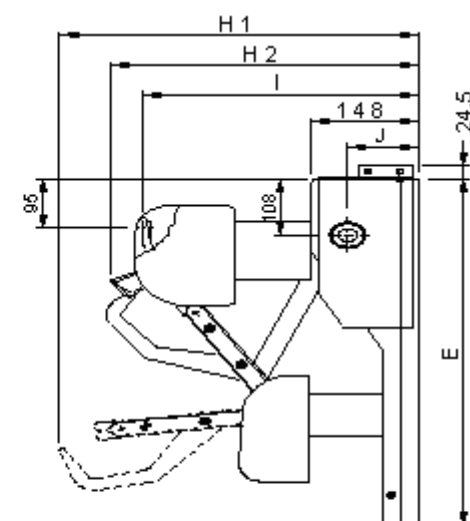
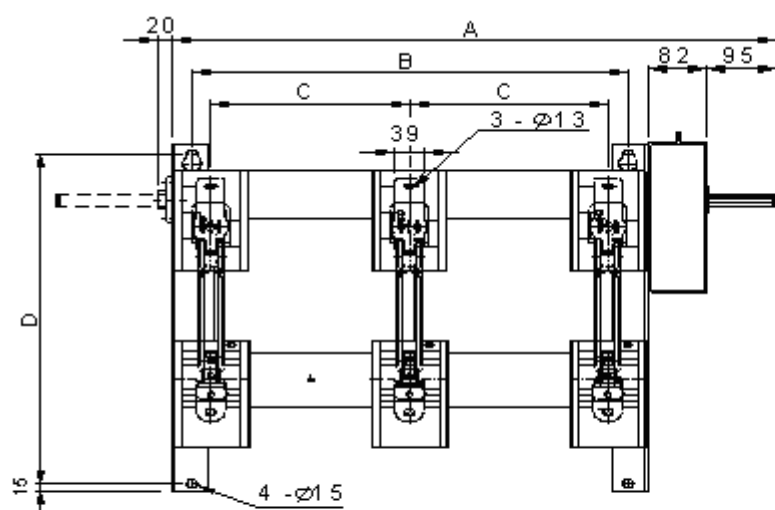
Rated voltage 額定電壓	24KV	12 kV
Peak withstand current 耐峰值電流	50 kA	50 kA
Short time current 1sec 短時間電流	12.5 kA	20 kA
Power frequency withstand voltage 交流耐壓	50 kV	42 kV
Impulse withstand voltage 衝擊耐壓 (1.2/50us)	125 kV	75 kV



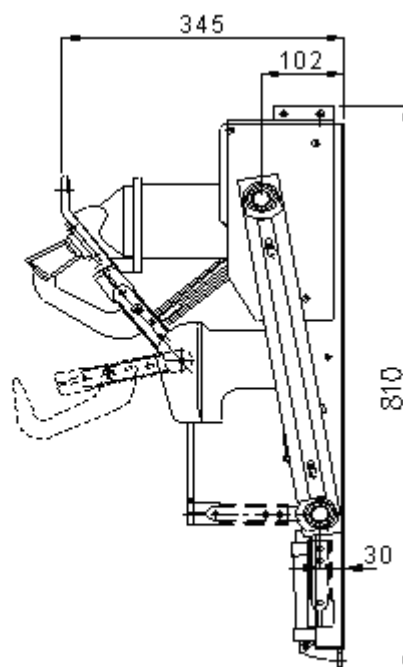
尺寸圖 Dimensions (mm)



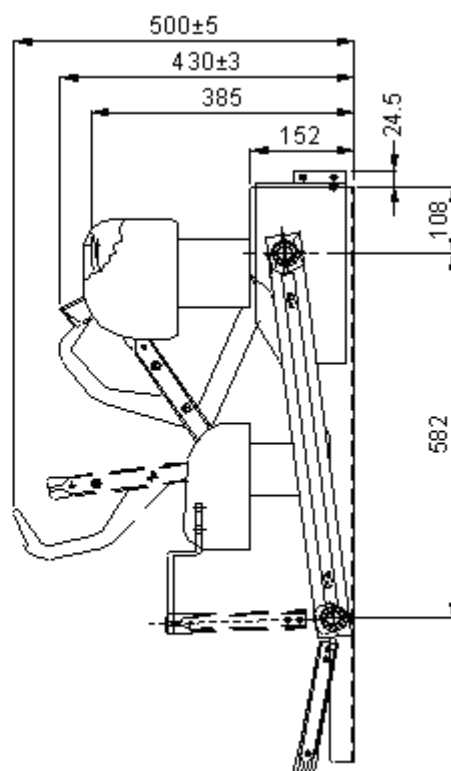
TYPE	A	B	C	D	E	F	G	H1	H2	I	J	K
JW 12-P150	590	350	150	508	275	150	542	385	362	322	90	173
JW 12-P210	710	470	210	508	275	150	542	385	362	322	90	173
JW 24-P275	840	605	275	630	430	150	665	500	430	380	98	273

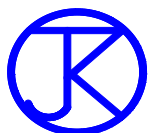


TYPE	A	B	C	D	E	H1	H2	I	J
JW 12-P150	590	350	150	508	542	385	362	322	90
JW 12-P210	710	470	210	508	542	385	362	322	90
JW 24-P275	840	605	275	630	665	500	430	380	98

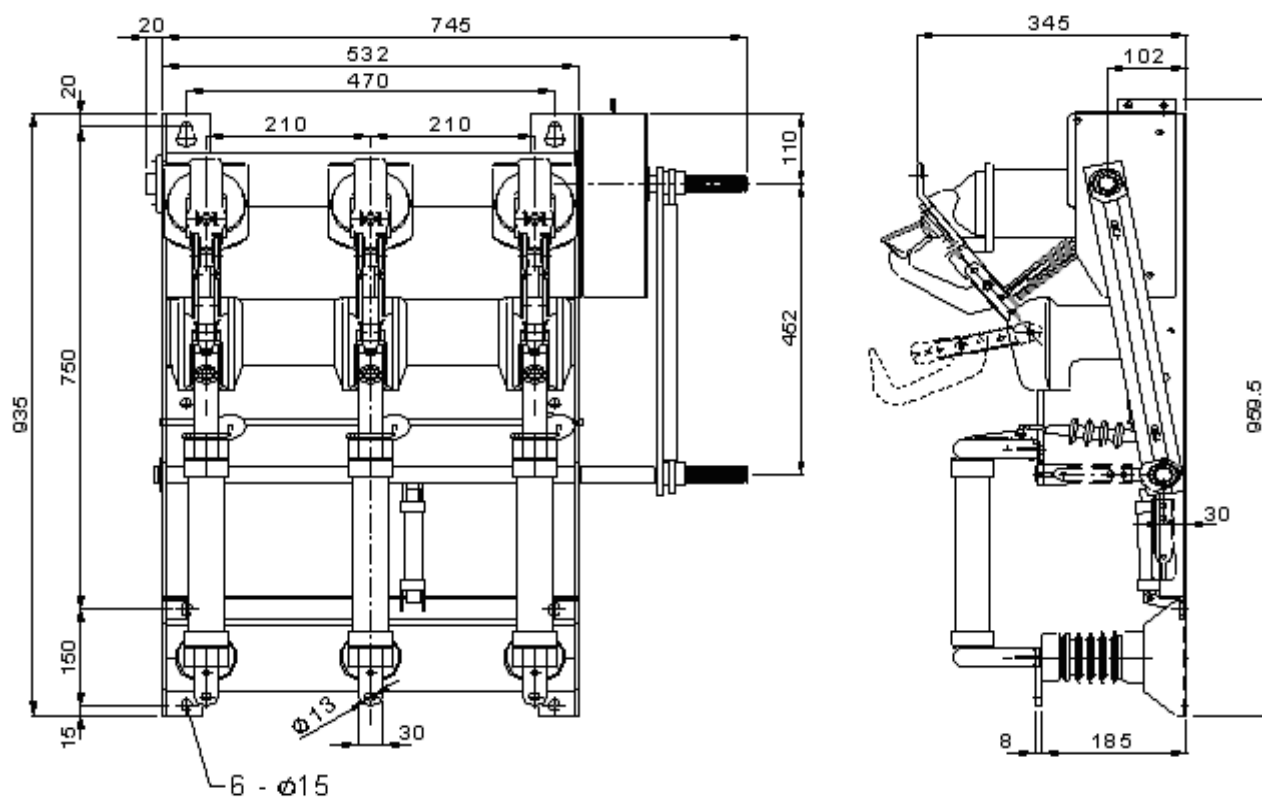


Technical drawing of the front view of a three-phase circuit breaker (CB) with dimensions in mm. The drawing shows a symmetrical design with three main vertical assemblies. Key dimensions include: overall width 742 mm, overall height 920 mm, distance between centers of vertical assemblies 275 mm, and various mounting and internal component dimensions like 28, 20, 530, 350, 135, and 582 mm. A label "6- Ø15" points to a mounting hole.

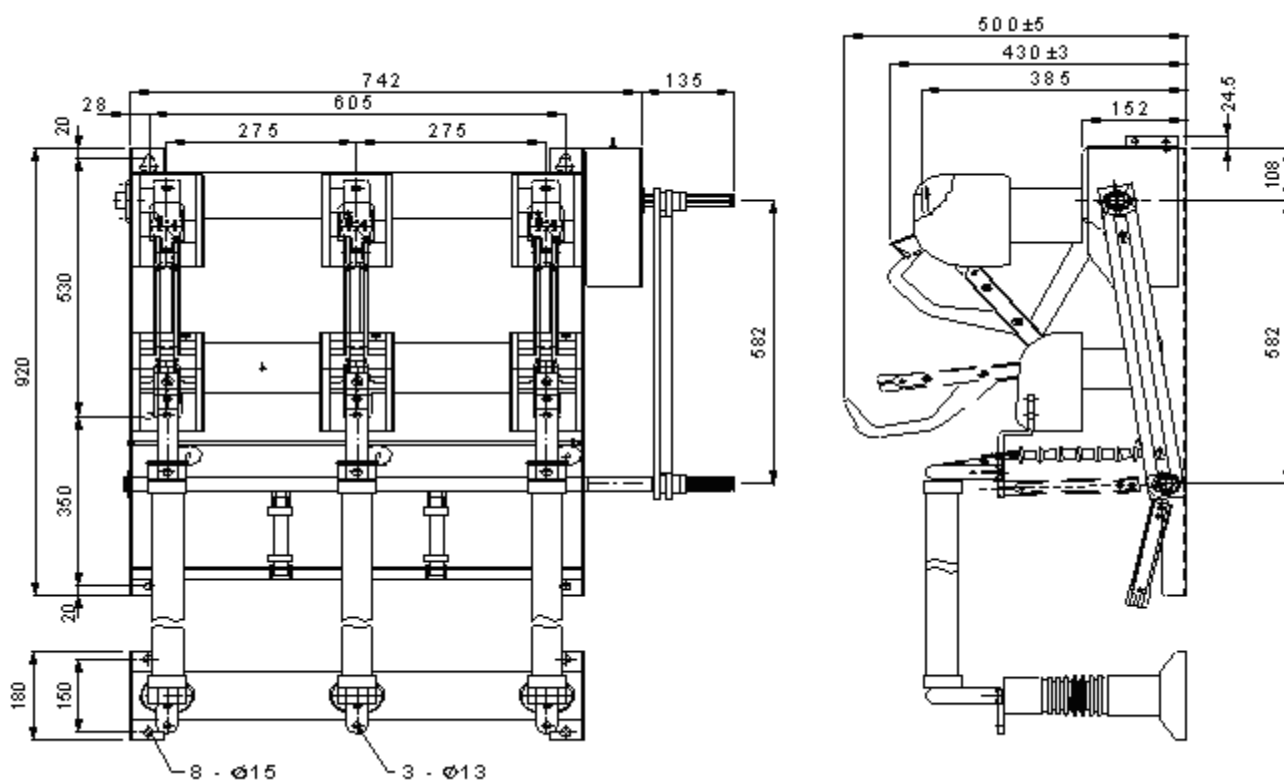




LEF12KV-630A 尺寸圖 Dimensions (mm)



LFE 24KV-630A 尺寸圖 Dimensions (mm)





標準附件

連接桿：1 組。

齒輪組：1 組。

萬向轉軸：1 組。

操作把手：1 支。

BUS 導電率 98%以上。

可指定右邊操作或左邊操作，操作軸可依實際需要指定長度，常用型為右邊操作。

Standard accessories

Connecting Level : 1.

Gear Assay : 1.

Universal joint : 1.

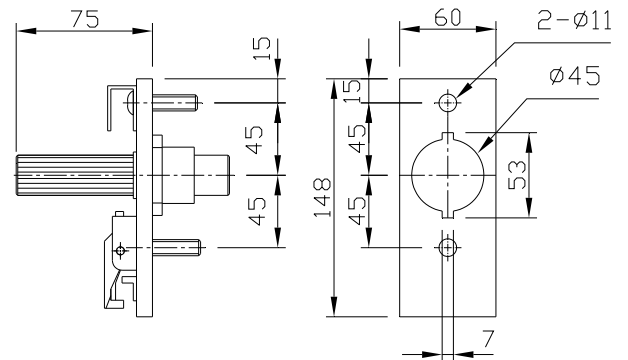
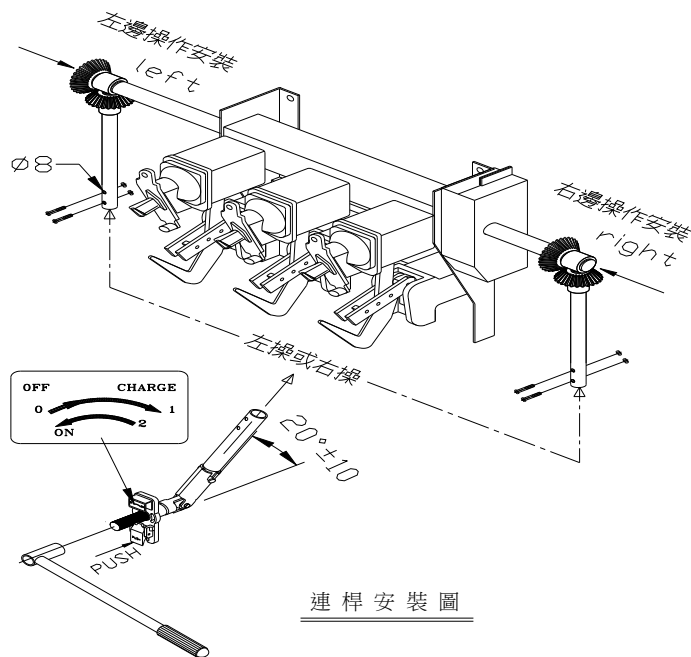
Operating Handle : 1.

The Electrical Conductivity of Bus is over 98% .

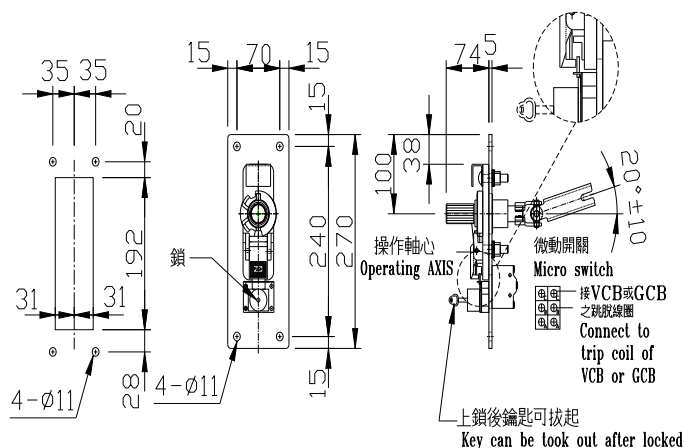
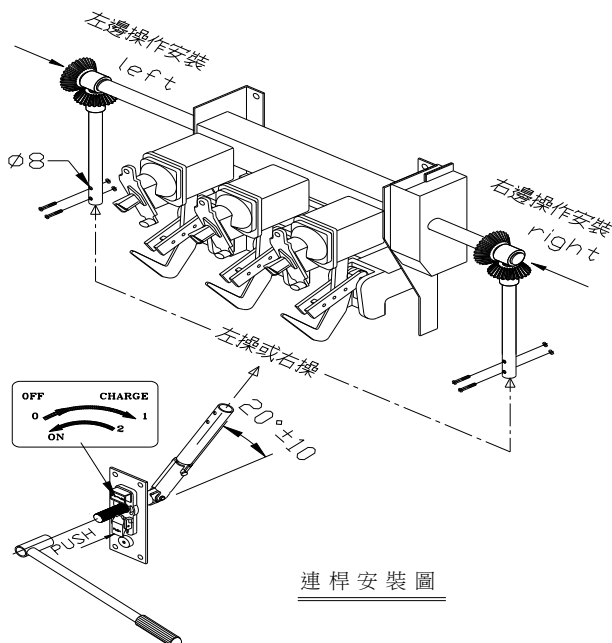
Right/Left reaction are available, Operating axis can be any length upon customers request.

Right erection is regular type.

手動安裝尺寸圖 Dimensions (mm)

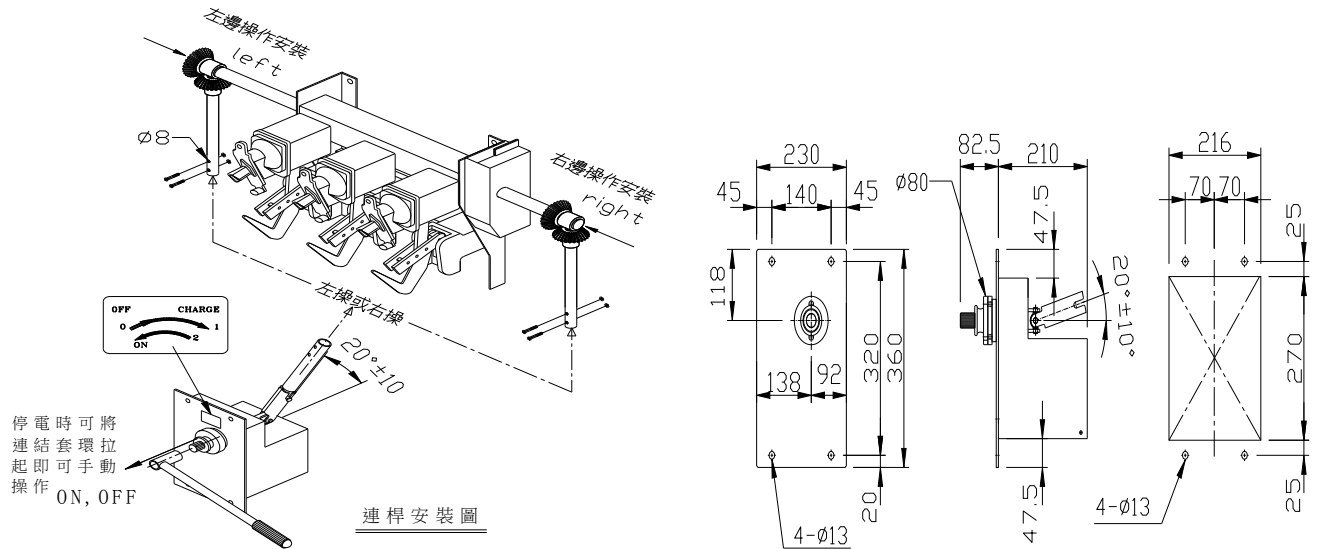


手動附鎖安裝尺寸圖 Dimensions (mm)





電動安裝尺寸圖 Dimensions (mm)



接線圖 (Control circuit)

