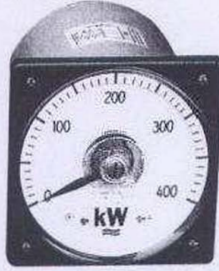


LS-110 PT
110V/5A 220V/5A 3W3 ϕ
380V/5A 3W4 ϕ



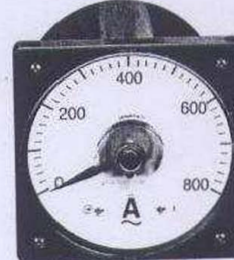
LS-110 3W 3 ϕ KW
110V, 220V, 380V
CT: 5A & 3W4 ϕ



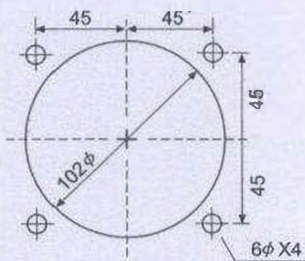
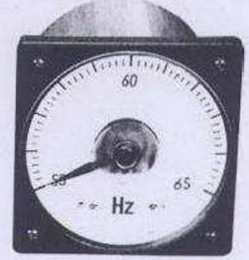
LS-110 AC, 600V
AC, 500V
AC, 300V



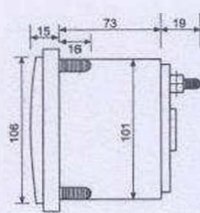
LS-110 AMPERS
CT: 5A



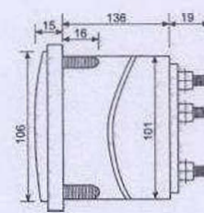
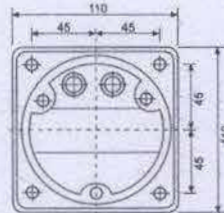
LS-110 HZ
45-55HZ
55-65HZ/110V, 220V, 380V



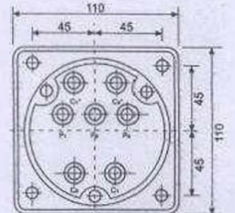
PANEL CUT-OUT



GENERAL DIMENSION



DIMENSION FOR LS-110 KW



MEASURING RANGES:

LS-110 A / V:

Moving Coll Type

DC uA	DC mA	DC A	DC V
500	1	1	30
	2	1.5	50
	5	2	100
	10	3	150
	20	5	300
	50	10	
	100	15	
	200	20	
500	30		

Moving Iron Type

AC A	AC V
1	150
5	300
	500
	600

- For ranges higher than 30A DC, use external shunt with a 50mV DC ammeter.
- For ranges higher than 300V DC, use external Multiplier with a 1mA Voltmeter.
- For ranges higher than 5A AC, Use external Current Transformer with a 5A AC Ammeter.
- For ranges higher than 600V AC, use external Potential Transformer with a 150V AC Voltmeter.

LS-110 KW : 110V,220V,380V,500V.
1A,5A.

- For any rating other than listed above, use external Current Transformer and/or external Potential Transformer with a 110V/5A instrument.

LS-110 COS ϕ : 110V,220V,380V,500V.
1A,5A.

- For any rating other than those listed above, use external Potential Transformer with a 110V/5A instrument.

LS-110 Hz : 110V, 220V, 380V, 500V.

- For a voltage rating higher than above, use an external Potential Transformer with a 110V instrument.

ACCURACY : LS-110 AV - Class 1.5
LS-110 KW - Class 1.5
LS-110 COS ϕ - 4° in phase angle.
LS-110 Hz-Class 1.5

FULL SCALE DEFLECTION : 250°

FULL SCALE LENGTH : 183mm, 7 1/4"

CASE AND COMPOSITION : Acrylic Resin cover, plastic meter body, bakelite terminal plate. Four stud mounting.

COLOUR : White scale plate, black terminal plate, grey meter body.

POINTER : Sword type in black colour.